

ELPM BUILDING BLOCKS

Building a Future

A Quarterly publication for our partners, supporters, and friends

IN THIS ISSUE:

- **ARCHE**
- Higher Return
- **AROUND THE BLOCK**
- Minnie Howell
- YMCA Paulding
- Beacon of Hope
- **SPECIAL INTEREST**
- Atlanta Women's Foundation
- Did You Know?
- **ELPM CENTERS MAP**



YOU must be the change YOU wish to see in the world.

Mahatma Gandhi



www.elpm.org

Higher Return

How investing in education pays off for Georgia

The Atlanta Regional Council for Higher Education (ARCHE) has publish its latest report showing the returns to individuals and society from investing in education—as measured in jobs, incomes, home ownership, school achievement, health and wellness, workforce talent, tax revenues, poverty rates, and public assistance and prison expense.

Investing in education is a smart thing to do. That's because education yields a big payoff for the individual—improved chances for a job and higher salary, greater likelihood of owning a home and avoiding poverty, kids who tend to do better in school. This report documents how the people of Georgia benefit when they invest in their own education by staying in school, going to college, and making sure their kids do the same.

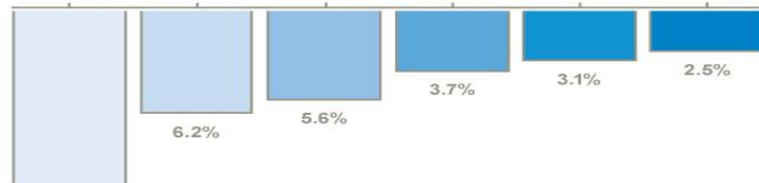
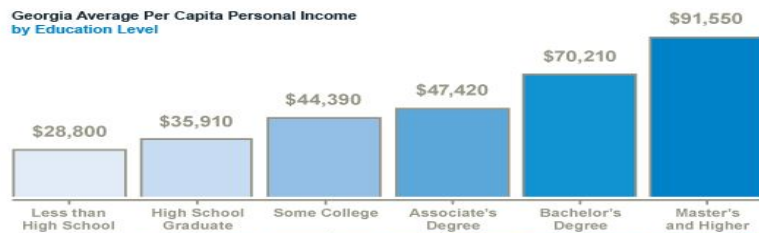
Please visit www.atlantahighered.org where you can read or download a complete report.

*Excerpts Reprinted by Permission
ARCHE*

The more you learn, the more you earn.

People with college degrees average higher personal incomes and are less likely to be unemployed. In fact, Georgians with bachelor's degrees average twice the income of people with high school diplomas and are half as likely to be unemployed.

Georgia Average Per Capita Personal Income by Education Level



Georgia Unemployment Rate by Education Level

Source: U.S. Census Bureau American Community Survey 2005-07. Includes total income from all sources for adults age 25-64, working full time. Unemployment rates for adults age 25-64.

NEWS AROUND THE BLOCK

New Partnership at Minnie Howell Child Development Center

New and eager little faces are occupying vacant classrooms at Minnie Howell as the center welcomes its recent partnership with Community Development Institute (CID). Minnie Howell looks forward to this new opportunity to expand its 0-4 year old enrollment. CID and Minnie Howell share a common goal: preparing young children for the future!

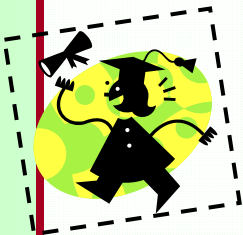
The Federal Office of Head Start (OHS) appoints CDI as an interim manager of Head Start and Early Head Start programs when a current grantee's responsibility for the program ceases. CDI Head Start, based in Denver, CO has provided interim services to over 102 programs since 2000.

www.cditeam.org - www.premier-academy.org



YMCA Paulding Early Learning Center

Prek at Paulding is ending the year on a good note! A kindergarten transition meeting with parents and three local kindergarten teachers was held in May to talk about the expectations for the new school year. The center will have four full prek classrooms next year, with an extensive waiting list!



Congratulations to Donna Lee and Tiffany Brown who graduated this past semester from Cobb Technical College with an AA in Early Childhood Education. Tiffany has already started her studies at Mercer for a BS in Early Childhood Education.

Summer Camp!!

Fit Kids will start June 8. Swim lessons will be held at the Cobb Northwest YMCA this summer. The Paulding Y will be using a bus from ECDC head start to transport children from the Paulding Y to the Cobb YMCA. Fun, Swim, and more Fun!!

Saralee Persails, Director
www.ymca.org

The Atlanta Symphony at Beacon of Hope

With a grant recently received from Humana Foundation's 2008 Atlanta Benefits, Beacon of Hope and the Atlanta Symphony Orchestra have collaborated in bringing classical music to at-risk children, youth and families.

AOS' *Kids With Strings* objective is to introduce innovative, interactive, hands-on, stimulating and engaging music as an educational project.

www.renaissancelearningctr.org



The Ripple Effect

Great things are happening in our community through the gifts and grants of The Atlanta Women's Foundation. The Atlanta Women's Foundation raises funds and grants to gift other non profits in Atlanta who address issues such as poverty, health, education, and affordable quality child care. A staggering 43% of female-headed households in Atlanta with one child have an income below the minimum budget needed for a family of this size; 61% for single women with two children! With incomes at this level, child care is not accessible or affordable.

It is well know the early years are the most formidable and not having access to quality child care and learning for these children creates an automatic disadvantage for educational success in later years. When children have the opportunity to attend high quality early learning centers, young children have the opportunity to learn and be prepared to succeed in their K-12 educational journey; children have the opportunity to succeed in life and be productive adults; families grow together and are involved in their child's education; health and nutrition awareness is brought to the families; community outreach programs are offered, government assisted programs and crime decrease – all of which create healthy, strong, empowering communities. The ripple effect is real and each "ripple" becomes larger and larger and reaches farther each time.

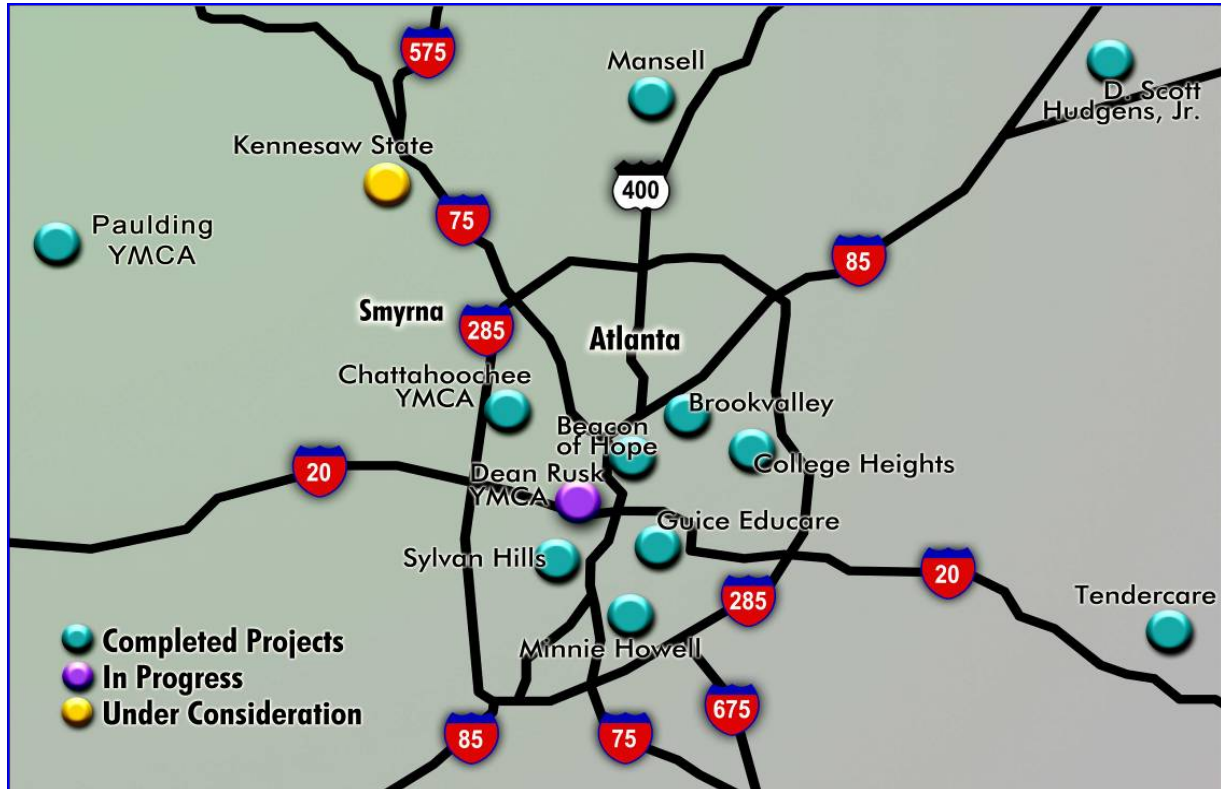
What a great opportunity Georgians have to continue these "ripples" and collaborate to empower every individual to lead quality lives and reach sustainable goals. "It's change, not charity; it's future, not hopelessness; it's economic empowerment, not system dependent." www.atlantawomen.org.



DID YOU KNOW.....

- High-quality programs have low child-to-adult ratios, small classes and trained teachers who interact often, in a positive, sensitive and stimulating way, with children. The academic edge delivered by these kinds of preschools endures at least through fifth grade, in the form of superior vocabulary skills!
Sue Shellenbarger—Wall Street Journal
- For over 40 years, in all 50 states and the District of Columbia, Head Start, our national pre-kindergarten program, has provided education and support services to your children from our lowest-income families. According to the National Head Start Association, Head Start serves more than one million children, from birth to age five, most at or below 100 percent of poverty. Now, with the rapid expansion of state funded pre-kindergarten, states are looking to Head Start as an important component of their early education system and, in many states, as a model early education program.
PreK Now - by permission 2009

Beach Bound this summer? Don't forget your summer reading list and your sun screen!!



ELPM CENTER LOCATIONS
 For ELPM center program information, please visit www.elpm.org

Mission Statement

To support and promote early childhood learning and development by providing safe and adequate facilities where early learning programs and activities can be conducted.

Early
Learning
Property
Management, **I** **N** **C**.

TO:

57 Executive Park
 Suite 315
 Atlanta, GA 30329

